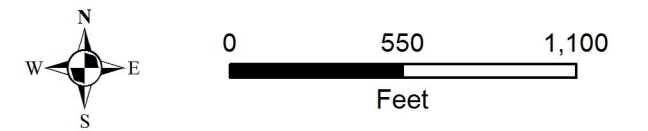


Watershed Action Plan Oyster Bay/Cold Spring Harbor



Legend

- Oyster Bay/Cold Spring Harbor Subwatersheds
- Recommendation**
- Potential Fish Passage Restoration Projects
- Potential Buffer Restoration Projects
- Recommended Stormwater Retrofits
- Potential Stream Restoration Projects
- Potential Wetland & Shoreline Restoration Projects
- Recharge Basins
- Storm Drainage Outfall
- Self-contained Drainage Areas



Data Sources:
 Town of Oyster Bay and Huntington GIS
 Nassau and Suffolk County GIS
 USGS/EPA National Hydrology Dataset Plus
 US Census 2000
 New York State Department of Environmental Conservation
 US Fish and Wildlife Service
 Center for Land Use Education and Research (CLEAR)
 Bing Maps Hybrid (c) 2010 Microsoft Corporation and its data suppliers
 J:\GIS\2005\1349\A31\Subwatershed Recommendations.mxd

Subwatershed Recommendations Bailey Arboretum Subwatershed



Watershed Action Plan Oyster Bay/Cold Spring Harbor



Legend

Oyster Bay/Cold Spring Harbor Subwatersheds

Recommendation

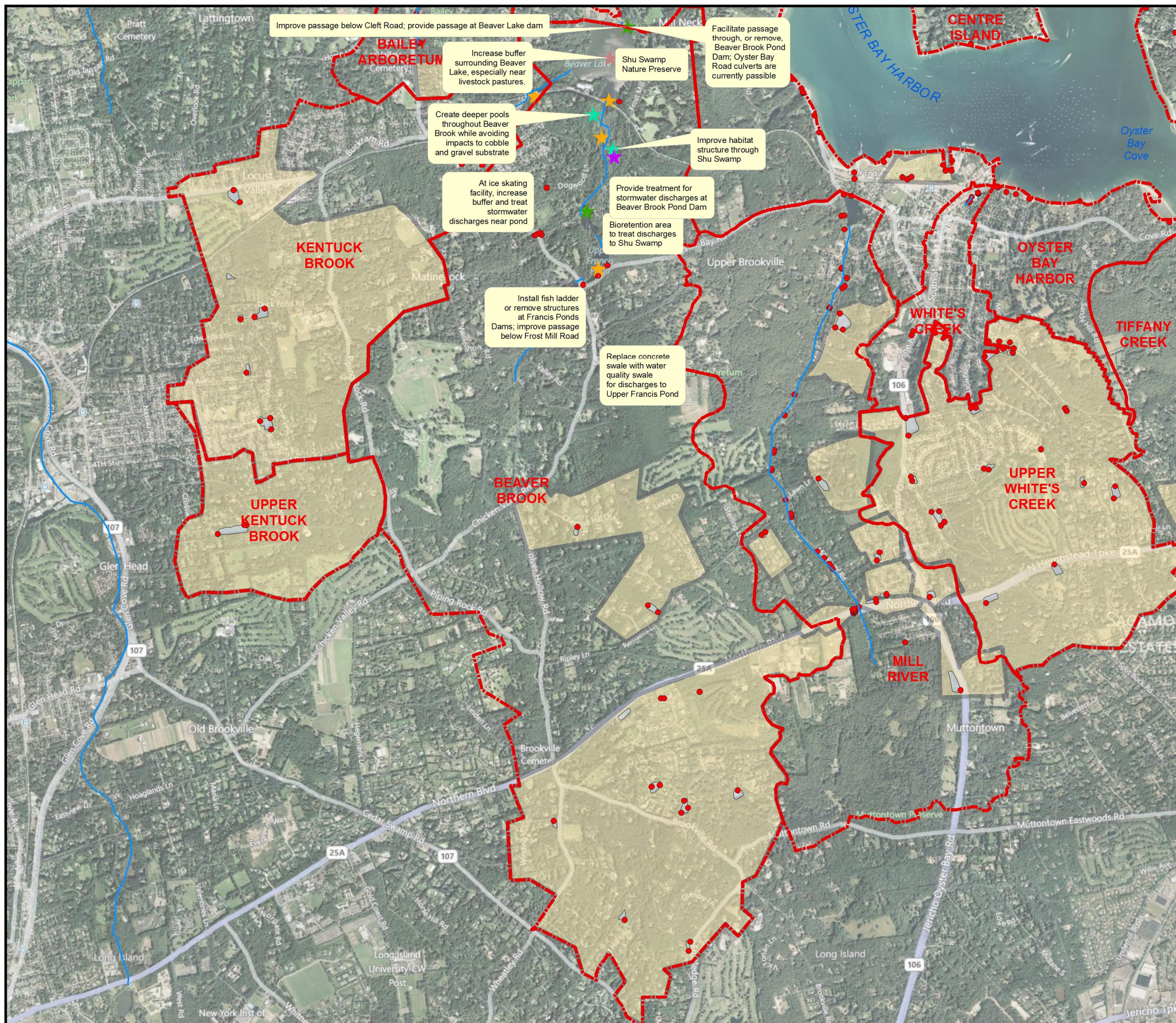
- Potential Fish Passage Restoration Projects
- Potential Buffer Restoration Projects
- Recommended Stormwater Retrofits
- Potential Stream Restoration Projects
- Potential Wetland & Shoreline Restoration Projects
- Recharge Basins
- Storm Drainage Outfall
- Self-contained Drainage Areas



0 2,500 5,000
Feet

Data Sources:
Town of Oyster Bay and Huntington GIS
Nassau and Suffolk County GIS
USGS/EPA National Hydrology Dataset Plus
US Census 2000
New York State Department of Environmental Conservation
US Fish and Wildlife Service
Center for Land Use Education and Research (CLEAR)
bing Maps Hybrid (c) 2010 Microsoft Corporation and its data suppliers
J:\GIS\2005\1349\A31\Subwatershed Recommendations.mxd

Subwatershed Recommendations Beaver Brook Subwatershed



Improve passage below Cleft Road; provide passage at Beaver Lake dam

BAILEY ARBORETUM

Increase buffer surrounding Beaver Lake, especially near livestock pastures.

Shu Swamp Nature Preserve

Facilitate passage through, or remove, Beaver Brook Pond Dam; Oyster Bay Road culverts are currently passable

Create deeper pools throughout Beaver Brook while avoiding impacts to cobble and gravel substrate

Improve habitat structure through Shu Swamp

At ice skating facility, increase buffer and treat stormwater discharges near pond

Provide treatment for stormwater discharges at Beaver Brook Pond Dam

Bioretention area to treat discharges to Shu Swamp

Install fish ladder or remove structures at Francis Ponds Dams; improve passage below Frost Mill Road

Replace concrete swale with water quality swale for discharges to Upper Francis Pond

KENTUCK BROOK

UPPER KENTUCK BROOK

BEAVER BROOK

WHITE'S CREEK

OYSTER BAY HARBOR

TIFFANY CREEK

UPPER WHITE'S CREEK

MILL RIVER

Long Island

Long Island University CW Post

Long Island

Jericho Tpk

Watershed Action Plan Oyster Bay/Cold Spring Harbor



Legend

Oyster Bay/Cold Spring Harbor Subwatersheds

Recommendation

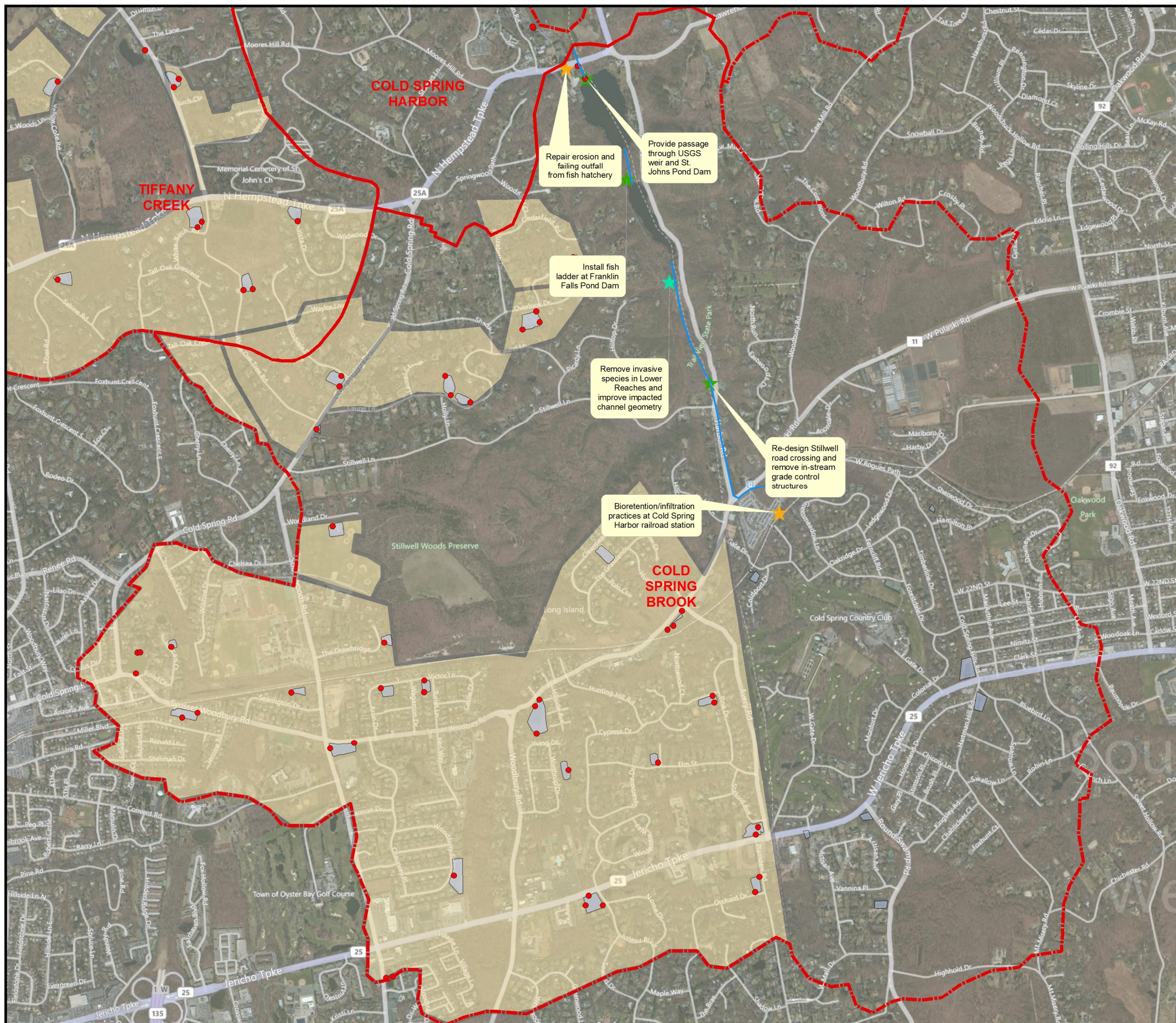
- Potential Fish Passage Restoration Projects
- Potential Buffer Restoration Projects
- Recommended Stormwater Retrofits
- Potential Stream Restoration Projects
- Potential Wetland & Shoreline Restoration Projects
- Recharge Basins
- Storm Drainage Outfall
- Self-contained Drainage Areas (Suffolk County Data Unavailable)



0 1,500 3,000
Feet

Data Sources:
Town of Oyster Bay and Huntington GIS
Nassau and Suffolk County GIS
USGS/EPA National Hydrology Dataset Plus
US Census 2000
New York State Department of Environmental Conservation
US Fish and Wildlife Service
Center for Land Use Education and Research (CLEAR)
bing Maps Hybrid (c) 2010 Microsoft Corporation and its data suppliers
J:\GIS\2005\1349\A31\Subwatershed Recommendations.mxd

Subwatershed Recommendations Cold Spring Brook Subwatershed





Watershed Action Plan Oyster Bay/Cold Spring Harbor

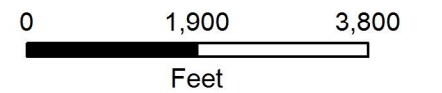
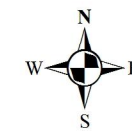


Legend

Oyster Bay/Cold Spring Harbor Subwatersheds

Recommendation

- Potential Fish Passage Restoration Projects
- Potential Buffer Restoration Projects
- Recommended Stormwater Retrofits
- Potential Stream Restoration Projects
- Potential Wetland & Shoreline Restoration Projects
- Recharge Basins
- Storm Drainage Outfall
- Self-contained Drainage Areas (Suffolk County Data Unavailable)



Data Sources:
 Town of Oyster Bay and Huntington GIS
 Nassau and Suffolk County GIS
 USGS/EPA National Hydrology Dataset Plus
 US Census 2000
 New York State Department of Environmental Conservation
 US Fish and Wildlife Service
 Center for Land Use Education and Research (CLEAR)
 Bing Maps Hybrid (c) 2010 Microsoft Corporation and its data suppliers
 J:\GIS\2005\1349\A31\Subwatershed Recommendations.mxd

Subwatershed Recommendations Cold Spring Harbor Subwatershed

Watershed Action Plan Oyster Bay/Cold Spring Harbor



Legend

Oyster Bay/Cold Spring Harbor Subwatersheds

Recommendation

- Potential Fish Passage Restoration Projects
- Potential Buffer Restoration Projects
- Recommended Stormwater Retrofits
- Potential Stream Restoration Projects
- Potential Wetland & Shoreline Restoration Projects
- Recharge Basins
- Storm Drainage Outfall
- Self-contained Drainage Areas



0 1,000 2,000
Feet

Data Sources:
Town of Oyster Bay and Huntington GIS
Nassau and Suffolk County GIS
USGS/EPA National Hydrology Dataset Plus
US Census 2000
New York State Department of Environmental Conservation
US Fish and Wildlife Service
Center for Land Use Education and Research (CLEAR)
bing Maps Hybrid (c) 2010 Microsoft Corporation and its data suppliers
J:\GIS\2005\1349\A31\Subwatershed Recommendations.mxd

Subwatershed Recommendations Centre Island Subwatershed



Watershed Action Plan Oyster Bay/Cold Spring Harbor

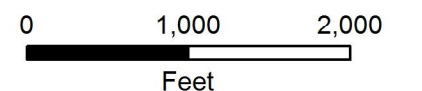


Legend

Oyster Bay/Cold Spring Harbor Subwatersheds

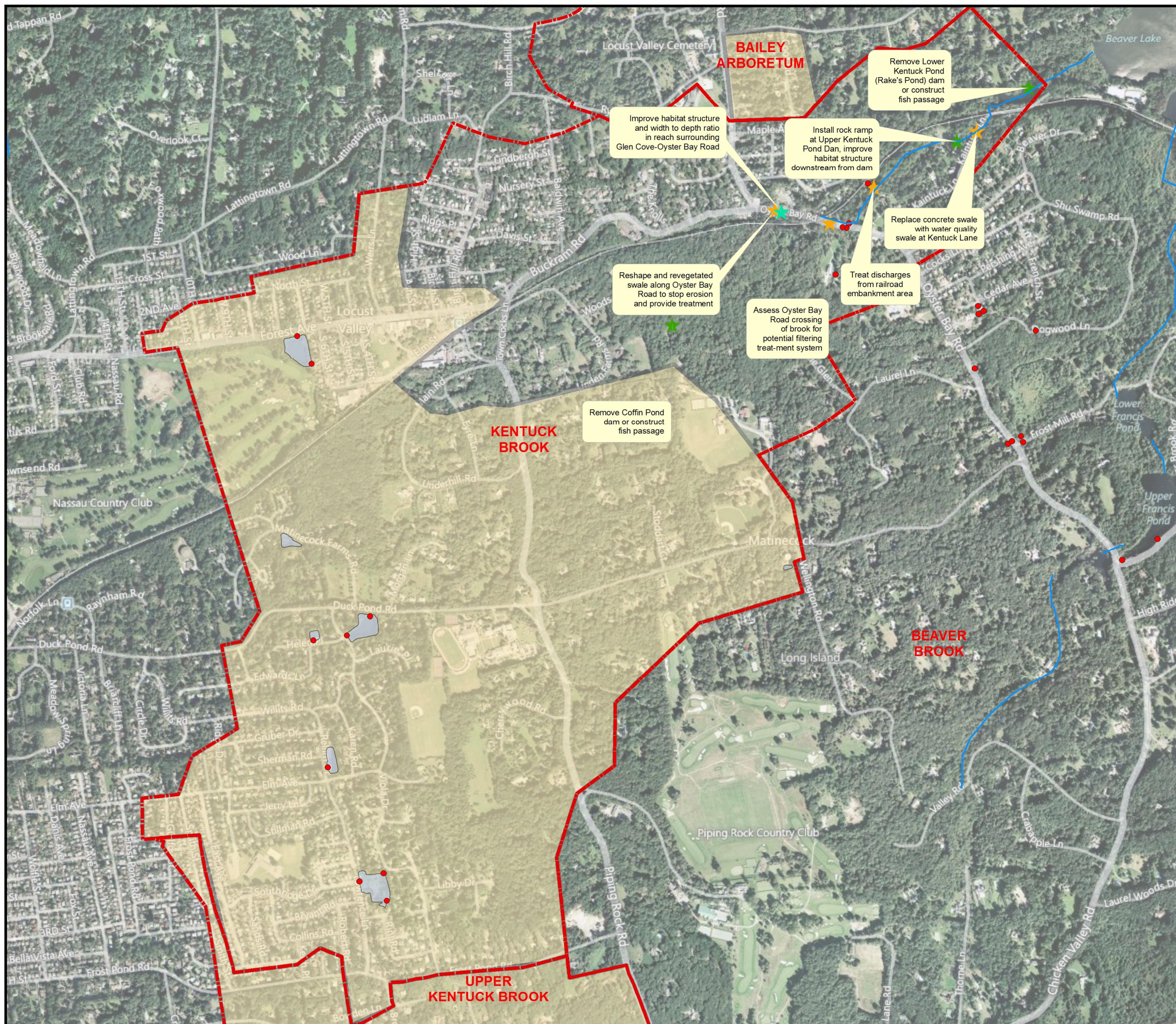
Recommendation

- Potential Fish Passage Restoration Projects
- Potential Buffer Restoration Projects
- Recommended Stormwater Retrofits
- Potential Stream Restoration Projects
- Potential Wetland & Shoreline Restoration Projects
- Recharge Basins
- Storm Drainage Outfall
- Self-contained Drainage Areas



Data Sources:
 Town of Oyster Bay and Huntington GIS
 Nassau and Suffolk County GIS
 USGS/EPA National Hydrology Dataset Plus
 US Census 2000
 New York State Department of Environmental Conservation
 US Fish and Wildlife Service
 Center for Land Use Education and Research (CLEAR)
 Bing Maps Hybrid (c) 2010 Microsoft Corporation and its data suppliers
 J:\GIS\2005\1349\A31\Subwatershed Recommendations.mxd

Subwatershed Recommendations Kentuck Brook Subwatershed



Watershed Action Plan Oyster Bay/Cold Spring Harbor

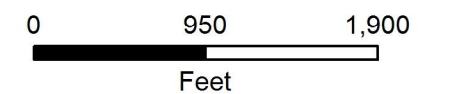


Legend

Oyster Bay/Cold Spring Harbor Subwatersheds

Recommendation

- Potential Fish Passage Restoration Projects
- Potential Buffer Restoration Projects
- Recommended Stormwater Retrofits
- Potential Stream Restoration Projects
- Potential Wetland & Shoreline Restoration Projects
- Recharge Basins
- Storm Drainage Outfall
- Self-contained Drainage Areas (Suffolk County Data Unavailable)



Data Sources:
 Town of Oyster Bay and Huntington GIS
 Nassau and Suffolk County GIS
 USGS/EPA National Hydrology Dataset Plus
 US Census 2000
 New York State Department of Environmental Conservation
 US Fish and Wildlife Service
 Center for Land Use Education and Research (CLEAR)
 Bing Maps Hybrid (c) 2010 Microsoft Corporation and its data suppliers
 J:\GIS\2005\1349\A31\Subwatershed Recommendations.mxd

Subwatershed Recommendations Lloyd Neck Subwatershed



Watershed Action Plan Oyster Bay/Cold Spring Harbor

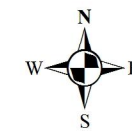


Legend

Oyster Bay/Cold Spring Harbor Subwatersheds

Recommendation

- Potential Fish Passage Restoration Projects
- Potential Buffer Restoration Projects
- Recommended Stormwater Retrofits
- Potential Stream Restoration Projects
- Potential Wetland & Shoreline Restoration Projects
- Recharge Basins
- Storm Drainage Outfall
- Self-contained Drainage Areas

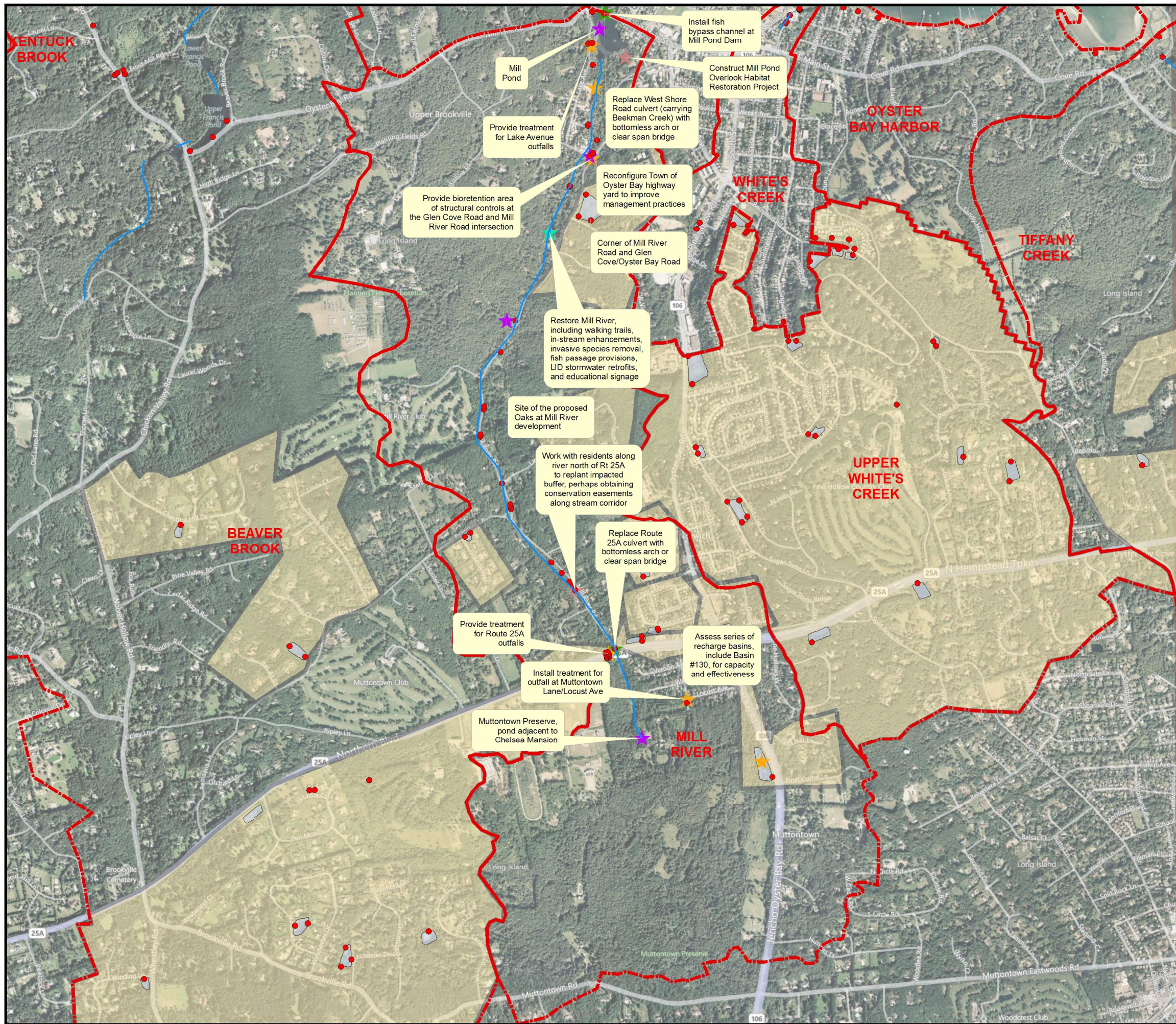


0 950 1,900
Feet

Data Sources:
Town of Oyster Bay and Huntington GIS
Nassau and Suffolk County GIS
USGS/EPA National Hydrology Dataset Plus
US Census 2000
New York State Department of Environmental Conservation
US Fish and Wildlife Service
Center for Land Use Education and Research (CLEAR)
bing Maps Hybrid (c) 2010 Microsoft Corporation and its data suppliers
J:\GIS\IP2005\1349\A31\Subwatershed Recommendations.mxd

Subwatershed Recommendations Mill Neck Creek Subwatershed





Watershed Action Plan Oyster Bay/Cold Spring Harbor

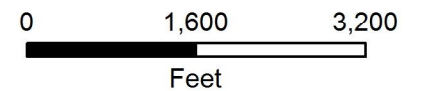
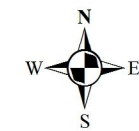


Legend

Oyster Bay/Cold Spring Harbor Subwatersheds

Recommendation

- Potential Fish Passage Restoration Projects
- Potential Buffer Restoration Projects
- Recommended Stormwater Retrofits
- Potential Stream Restoration Projects
- Potential Wetland & Shoreline Restoration Projects
- Recharge Basins
- Storm Drainage Outfall
- Self-contained Drainage Areas



Data Sources:
 Town of Oyster Bay and Huntington GIS
 Nassau and Suffolk County GIS
 USGS/EPA National Hydrology Dataset Plus
 US Census 2000
 New York State Department of Environmental Conservation
 US Fish and Wildlife Service
 Center for Land Use Education and Research (CLEAR)
 Bing Maps Hybrid (c) 2010 Microsoft Corporation and its data suppliers
 J:\GIS\2005\1349\A31\Subwatershed Recommendations.mxd

Subwatershed Recommendations Mill River Subwatershed

Watershed Action Plan Oyster Bay/Cold Spring Harbor

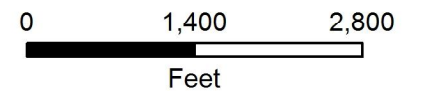
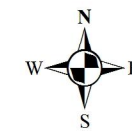


Legend

Oyster Bay/Cold Spring Harbor Subwatersheds

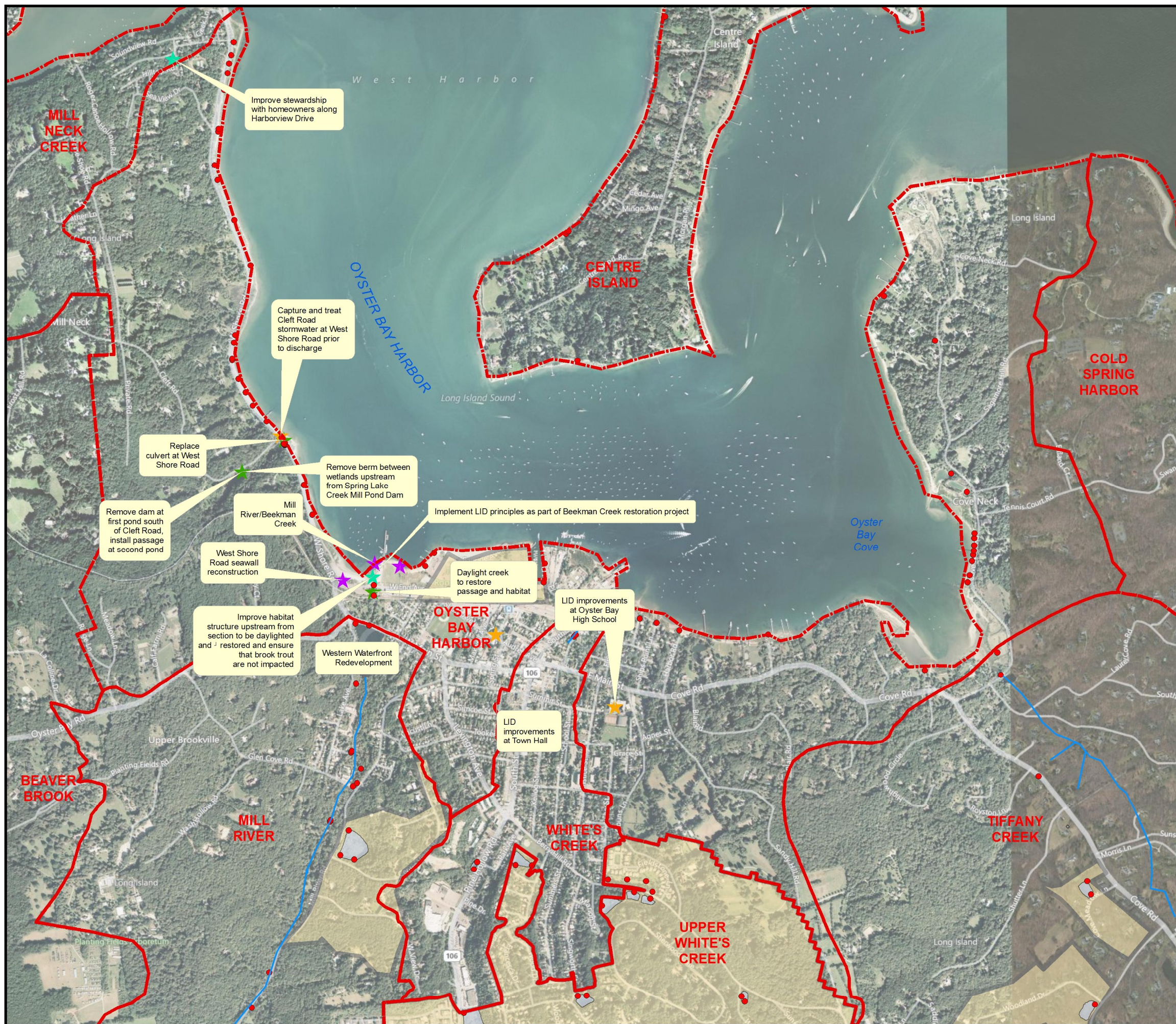
Recommendation

- Potential Fish Passage Restoration Projects
- Potential Buffer Restoration Projects
- Recommended Stormwater Retrofits
- Potential Stream Restoration Projects
- Potential Wetland & Shoreline Restoration Projects
- Recharge Basins
- Storm Drainage Outfall
- Self-contained Drainage Areas



Data Sources:
 Town of Oyster Bay and Huntington GIS
 Nassau and Suffolk County GIS
 USGS/EPA National Hydrology Dataset Plus
 US Census 2000
 New York State Department of Environmental Conservation
 US Fish and Wildlife Service
 Center for Land Use Education and Research (CLEAR)
 Bing Maps Hybrid (c) 2010 Microsoft Corporation and its data suppliers
 J:\GIS\2005\1349\A31\Subwatershed Recommendations.mxd

Subwatershed Recommendations Oyster Bay Harbor Subwatershed



Watershed Action Plan Oyster Bay/Cold Spring Harbor

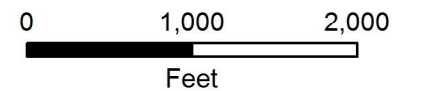
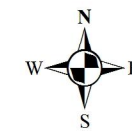


Legend

Oyster Bay/Cold Spring Harbor Subwatersheds

Recommendation

- Potential Fish Passage Restoration Projects
- Potential Buffer Restoration Projects
- Recommended Stormwater Retrofits
- Potential Stream Restoration Projects
- Potential Wetland & Shoreline Restoration Projects
- Recharge Basins
- Storm Drainage Outfall
- Self-contained Drainage Areas



Data Sources:
 Town of Oyster Bay and Huntington GIS
 Nassau and Suffolk County GIS
 USGS/EPA National Hydrology Dataset Plus
 US Census 2000
 New York State Department of Environmental Conservation
 US Fish and Wildlife Service
 Center for Land Use Education and Research (CLEAR)
 Bing Maps Hybrid (c) 2010 Microsoft Corporation and its data suppliers
 J:\GIS\IP2005\1349\A31\Subwatershed Recommendations.mxd

Subwatershed Recommendations Tiffany Creek Subwatershed



Watershed Action Plan Oyster Bay/Cold Spring Harbor

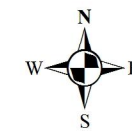


Legend

Oyster Bay/Cold Spring Harbor Subwatersheds

Recommendation

- Potential Fish Passage Restoration Projects
- Potential Buffer Restoration Projects
- Recommended Stormwater Retrofits
- Potential Stream Restoration Projects
- Potential Wetland & Shoreline Restoration Projects
- Recharge Basins
- Storm Drainage Outfall
- Self-contained Drainage Areas

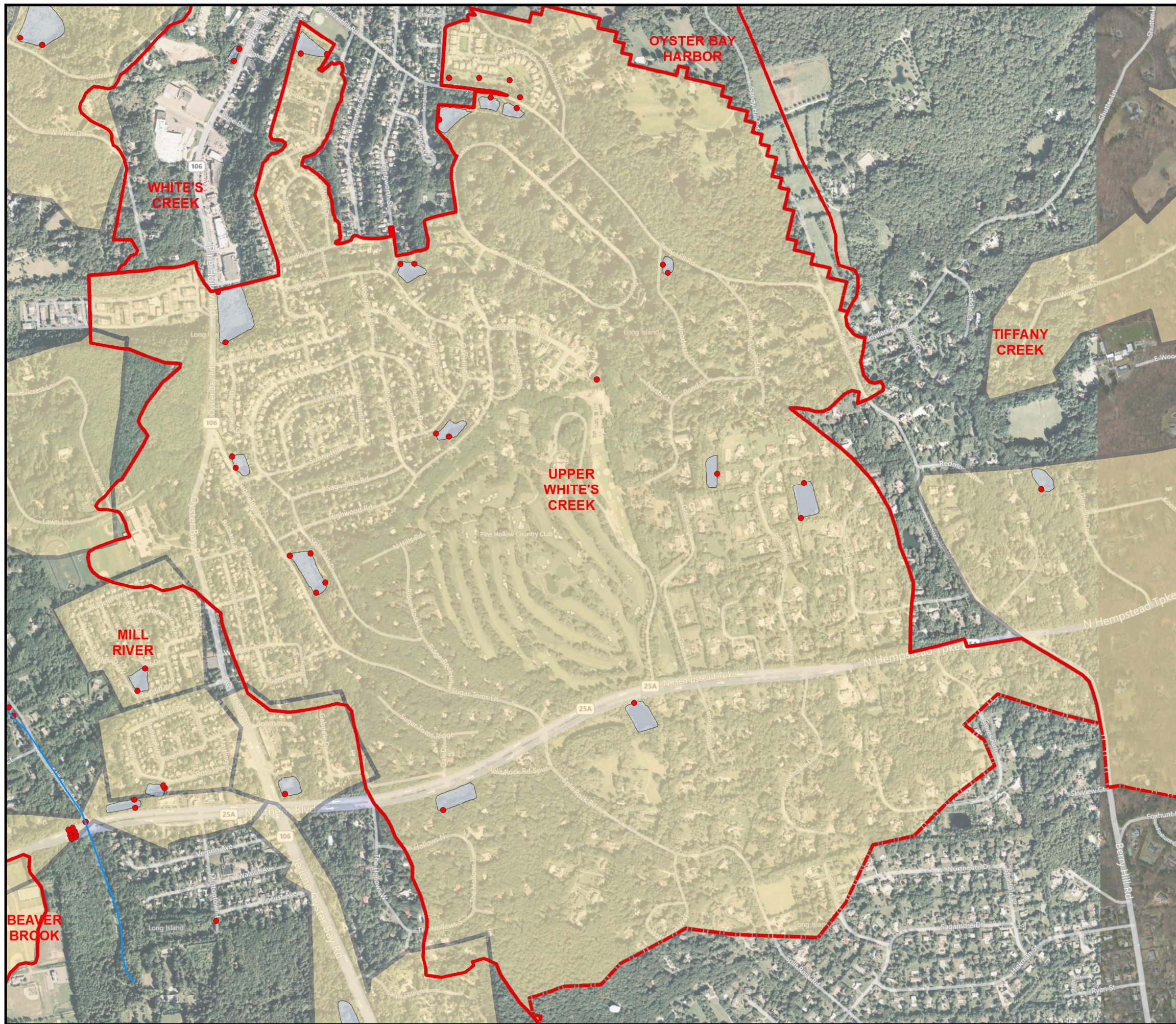


0 490 980
Feet

Data Sources:
Town of Oyster Bay and Huntington GIS
Nassau and Suffolk County GIS
USGS/EPA National Hydrology Dataset Plus
US Census 2000
New York State Department of Environmental Conservation
US Fish and Wildlife Service
Center for Land Use Education and Research (CLEAR)
bing Maps Hybrid (c) 2010 Microsoft Corporation and its data suppliers
J:\GIS\2005\1349\A31\Subwatershed Recommendations.mxd

Subwatershed Recommendations Upper Kentuck Brook Subwatershed





Watershed Action Plan Oyster Bay/Cold Spring Harbor



Legend

-  Oyster Bay/Cold Spring Harbor Subwatersheds
- Recommendation**
-  Potential Fish Passage Restoration Projects
-  Potential Buffer Restoration Projects
-  Recommended Stormwater Retrofits
-  Potential Stream Restoration Projects
-  Potential Wetland & Shoreline Restoration Projects
-  Recharge Basins
-  Storm Drainage Outfall
-  Self-contained Drainage Areas



Data Sources:
 Town of Oyster Bay and Huntington GIS
 Nassau and Suffolk County GIS
 USGS/EPA National Hydrology Dataset Plus
 US Census 2000
 New York State Department of Environmental Conservation
 US Fish and Wildlife Service
 Center for Land Use Education and Research (CLEAR)
 Bing Maps Hybrid (c) 2010 Microsoft Corporation and its data suppliers
 J:\GIS\2005\1349\A31\Subwatershed Recommendations.mxd

Subwatershed Recommendations Upper White's Creek Subwatershed

Watershed Action Plan Oyster Bay/Cold Spring Harbor

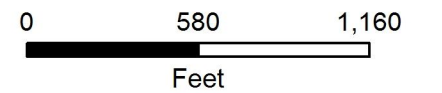
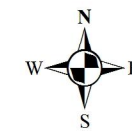


Legend

Oyster Bay/Cold Spring Harbor Subwatersheds

Recommendation

- Potential Fish Passage Restoration Projects
- Potential Buffer Restoration Projects
- Recommended Stormwater Retrofits
- Potential Stream Restoration Projects
- Potential Wetland & Shoreline Restoration Projects
- Recharge Basins
- Storm Drainage Outfall
- Self-contained Drainage Areas



Data Sources:
 Town of Oyster Bay and Huntington GIS
 Nassau and Suffolk County GIS
 USGS/EPA National Hydrology Dataset Plus
 US Census 2000
 New York State Department of Environmental Conservation
 US Fish and Wildlife Service
 Center for Land Use Education and Research (CLEAR)
 Bing Maps Hybrid (c) 2010 Microsoft Corporation and its data suppliers
 J:\GIS\IP2005\1349\A31\Subwatershed Recommendations.mxd

Subwatershed Recommendations White's Creek Subwatershed

