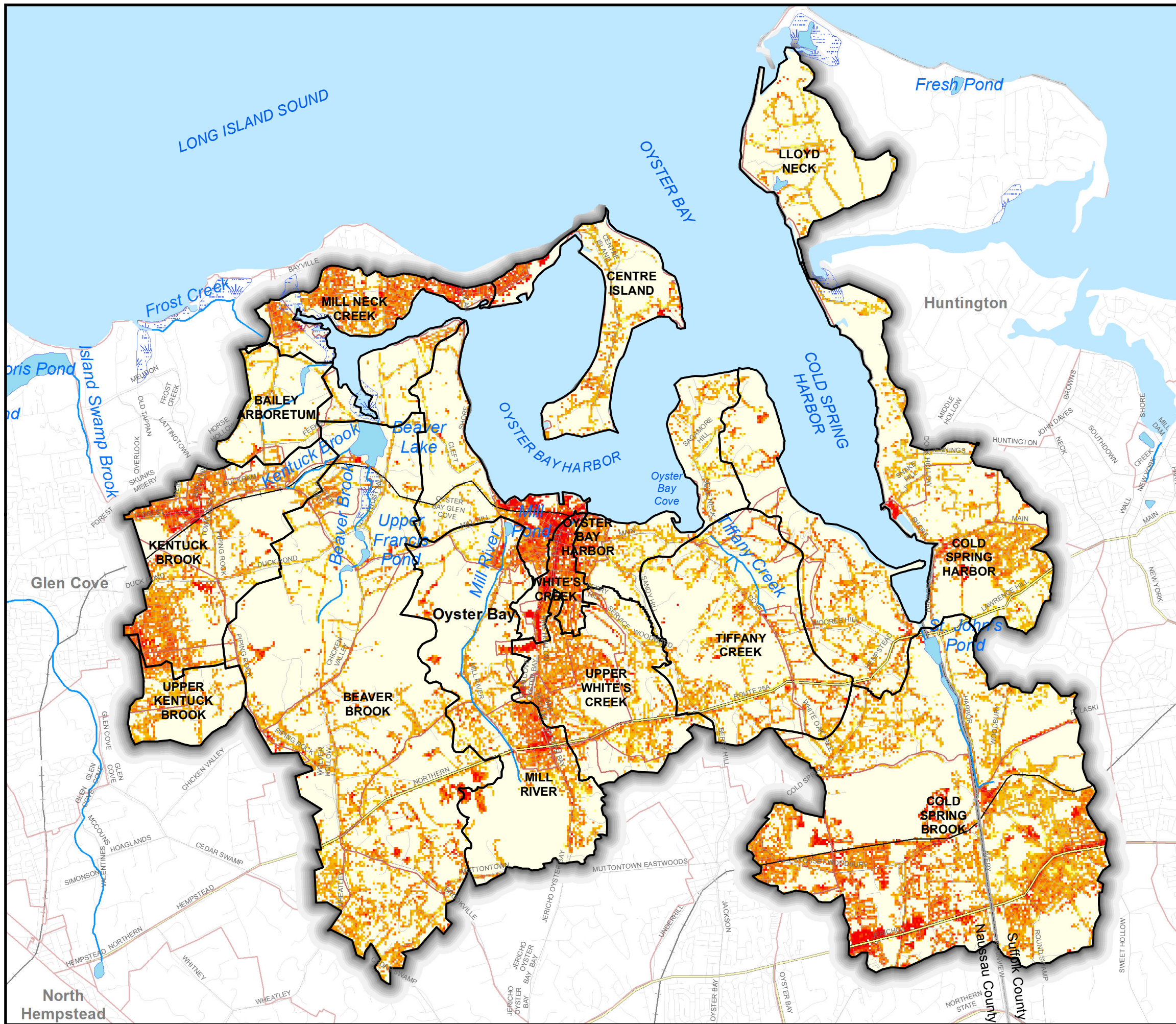


Watershed Action Plan Oyster Bay/Cold Spring Harbor



Legend

- Oyster Bay/Cold Spring Harbor Subwatersheds
- Counties
- Village/Hamlet
- Impervious Cover**
- <10%
- 10-19%
- 20-29%
- 30-39%
- 40-49%
- 50-59%
- 60-69%
- 70-79%
- 80-89%
- 90-100%



Data Sources:
 Town of Oyster Bay and Huntington GIS
 Nassau and Suffolk County GIS
 USGS/EPA National Hydrology Dataset Plus
 US Census 2000
 New York State Department of Environmental Conservation
 US Fish and Wildlife Service
 Center for Land Use Education and Research (CLEAR)
 ArcMap Document Path: J:\GIS\IP2005\1349\A31\Impervious Cover.mxd

**Figure 1-3
Watershed Impervious Cover**